

# Cshcn services program provider manual

TEXAS MEDICAID PROVIDER PROCEDURES MANUAL, VOL. 1

## TMHP Telephone and Fax Communication

Contact	Telephone/ Fax Number
TMHP Contact Center (general information)	1-800-925-9126
Automated Inquiry System (AIS)	or (512) 333-5986
Provider Enrollment Fax	(512) 514-4214
Comprehensive Care Program (CCP)	1-800-866-7470
(CCP prior authorization status and general CCP and Home Health Services information)	fax: (512) 514-4212
Children with Special Health Care Needs (CSHCN) Services Program AIS	1-800-568-2413
CSHCN Services Program Fax	(512) 514-4222
Comprehensive Care Inpatient Psychiatric (CCIP) Unit (prior authorization and general information)	1-800-213-8877
Home Health Services (includes durable medical equipment (DME)):	1-800-925-8997
Option 1 – TMHP in-home care customer service	
Option 2 – DME supplier with completed Title XXV form	
Option 3 – Registered nurse (RN) with completed plan of care (POC)	
Health Insurance Premium Payment (HIPP)	1-800-440-0493
Long Term Care (LTC) Operations	1-800-626-4117
LTC—Nursing Facilities	1-800-727-5436
Telephone Appeals	1-800-745-4452
TMHP Electronic Data Interchange (EDI) Help Desk	1-888-863-3638
TMHP EDI Help Desk Fax	(512) 514-4228
Texas Health Steps (THSteps) Dental Inquiries	(512) 514-4230
THSteps Medical Inquiries	1-800-568-2460
THSteps Medical Inquiries	1-800-757-5691
Third Party Liability (TPL) (Option 2)	1-800-846-7307
TPL (Option 3)	1-800-846-7307
TPL/Toot Fax	(512) 514-4225
Medicaid Audit/Cost Reports	(512) 506-6117
Medicaid Audit Fax	(512) 506-7811
Family Planning (Tubal Ligation/Vasectomy Consent Forms) Fax	(512) 514-4229
Hysterectomy Acknowledgment Statements Fax	(512) 514-4218

### Written Communication With TMHP

All CMS-1500 forms (excluding ambulance, radiology/laboratory, immunization services, rural health, and mental health rehabilitation) sent to TMHP for the first time, as well as claims being resubmitted because they were initially denied as non-eligible claims, must be sent to the following address:

Texas Medicaid & Healthcare Partnership  
Claims  
PO Box 200555  
Austin, TX 78720-0555

PDF ONLY - COPYRIGHT 2015 AMERICAN MEDICAL ASSOCIATION. ALL RIGHTS RESERVED.

**File Name:** Cshcn services program provider manual.pdf

**Size:** 1902 KB

**Type:** PDF, ePub, eBook

**Category:** Book

**Uploaded:** 19 May 2019, 19:26 PM

**Rating:** 4.6/5 from 725 votes.

**Download Now!**

Please check the box below to proceed.



I'm not a robot



reCAPTCHA  
Privacy - Terms

## Book Descriptions:

# Cshcn services program provider manual



Find a testing site. More COVID19 information. These include Social workers are available to help with the process. Find your region. To find the office nearest you, see the Public Health Coverage List or Public Health Coverage Map. You may also mail your application documents to. Some require Medicaid eligibility, and some do not. Medicaid providers may also apply for enrollment as CSHCN providers. Patients must reapply for CSHCN Services Program healthcare benefits every six months. A new application and all proofs of financial eligibility must be submitted each time a patient reapplies. Providers of medical services must be actively enrolled as a Texas Medicaid provider as a prerequisite to becoming a CSHCN Services Program provider. This requirement is waived for providers of nonmedical program services. Click here to see information on applying to the program. Online Enrollment is available. You can also download a PDF or ZIP file of the manual. It contains extensive details on patient eligibility, provider enrollment, benefits, limitations, authorization requirements, and other policy information. CSHCN assistance is available for Texas residents, as defined by the Texas Administrative Code, regardless of their citizenship status in the United States. The CSHCN Services Program is diagnosis-driven, and her condition, if not corrected, will lead to death or significant disability during the patient's lifetime. CSHCN assistance is available for Texas residents, as defined by the Texas Administrative Code, regardless of their citizenship status in the United States. These patients receive assistance with accessing health-related resources and services, educational services, vocational services, psychosocial services, financial assistance, or transportation services from case managers. To make a referral, call 877THSTEPS or obtain a Physician Referral Form from DSHS. It is available to women aged 18 to 44 and who meet other eligibility requirements. <http://teleinwestor.com/userfiles/hotpoint-oven-manual-sabbath-mode.xml>

- **csHCN services program provider manual, cshcn services program provider manual chapter 38 telecommunication services, cshcn services program provider manual, cshcn services program provider manual, cshcn services program provider manual download, cshcn services program provider manual free, cshcn services program provider manual online, cshcn services program provider manual 2017, cshcn services program provider manual 2016, cshcn services program provider manual template, cshcn services program provider manual form, cshcn services program provider manual program, cshcn services program provider manual.**



Providers who deliver family planning services, have completed the Medicaid enrollment process, and do not perform elective abortions are eligible to participate. This program helps families who need health insurance, but make too much money to qualify for traditional Medicaid. Families “buy in” to Medicaid by making a monthly payment premium. Someone in the family must be able to get a health plan at work, and it must cost less to cover the family with the health plan than it costs to cover the family members with Medicaid. Medicaid pays the copays and deductibles when people with HIPP and Medicaid see a Medicaid doctor. It offers free transportation to get to the doctor, dentist, and other covered services such as to the drugstore for medicines when the patient has no other means of transportation to access a medically needed service or benefit. The transportation services help patients miss fewer appointments. It also allows scheduling of multiple appointments at one time. To obtain these trainings, contact your Texas Health Steps Provider outreach representative. The program accepts patients covered by Medicaid, CHIP, or commercial insurance, or who have the ability to pay. They include Coverage is available for services within the amount, duration, and scope of Texas Medicaid. It contains information about Texas Medicaid benefits, policies, and procedures including medical, dental, and children’s services benefits. Banner messages are used to update the TMPPM. Banner messages are used to update the manual. Children with Special Health Care Needs; Chronic Disease; Client Services Contracting Unit CSHCN Services Program Provider Manual Annual; Newsletter. Instructions To find a doctor, hospital or other participating provider we offer two 2 search methods. Fee Schedules; Provider Bulletins; Provider Manual; Health Plan Resources; Provider Resources.D.<http://www.issindustrial.com/images/admin/hotpoint-oven-manual-shs33x.xml>



KANSAS MEDICAL ASSISTANCE PROGRAM  
Fee-for-Service Provider Manual

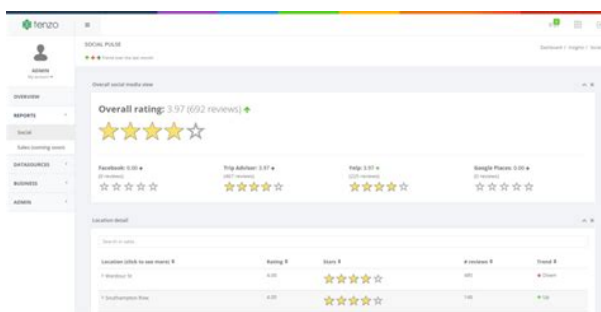
**Targeted Case Management**  
Intellectual/Developmentally  
Disabled

Updated 05.2016

Please contact the Provider Relations department with any suggestions for additions or improvements to this manual. The manual serves as an operational reference for health care. SHCN Family Care Manual Forms Booklet. The oversight of SHARS is a cooperative effort between the Texas Education Agency TEA and Health and Human Services Commission HHSC. 4. In addition, some of the local CSHCN programs offer case management services. Pharmacy Provider Procedure Manual. Health Plan of San Joaquin HPSJ is pleased to have you as part of cshcn services program provider manual our provider network. The form may be copied or printed and used to supplement, but not substitute for, the medical record. Pharmacy Provider Procedure Manual. Ebook Download Children with Special. Children with Special Health Care Needs. The cshcn services program provider manual program promotes an integrated system of services for infants, children and youth up to age 18 years who have or cshcn services program provider manual are at risk for chronic physical, developmental, behavioral, or emotional conditions and require health and related services of a type or amount beyond what is cshcn services program provider manual generally needed. Requests to the Case Planning Unit should be. The Online Fee Lookup provides fee information for Texas Medicaid, including Texas Health Steps THSteps, the DSHS Family Planning Program, DSHS Expanded Primary Health Care Program and the CSHCN Services Program. The purpose of the Baby Watch Early Intervention Program BWEIP is to cshcn services program provider manual enhance early growth and development in infants and toddlers, who have developmental delays or disabilities or both, by providing individualized support and services to the child and their family. The following chapters of the BMS Provider Manual will be updated on an ongoing basis to reflect.

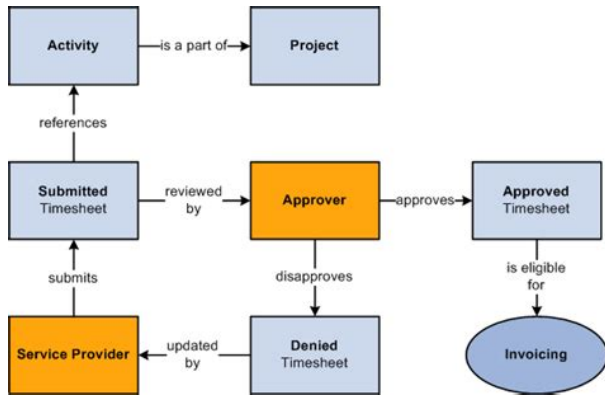
TMHP will continue to accept dental claims submitted on the 20ADA dental claim forms and will update the Texas Medicaid Provider Procedures Manual and the Children with Special Health Care Needs CSHCN Services Program. West Virginia Children with Special Health Care Needs Program Policy Manual access a range of health care services. Updates to policy and program information can be found on the TMHP website in the current TMPPM and CSHCN Services Program Provider manual, web articles, and banner messages. Please note that pharmacy providers have a separate manual. Reminder Providers can submit dental claims electronically through TexMedConnect. Indiana Childrens Special Health Care Services provides supplemental medical coverage to help families of children who have serious, chronic medical conditions, age birth to 21 years of age, who

meet the programs financial and medical criteria, pay for treatment related to their child's condition. For information on how to access the Pharmacy Manual, please see the Pharmacy Providers on page of this section. Responsible for the management of client service contracts and the provision of health related services. The specific requirements or preferences of CSHCN services program provider manual your reviewing publisher, classroom teacher, institution or organization should be applied. Children with Special Health Care Needs CSHCN Services Program Provider Manual. State's participation in and provisions of the EPSDT program's services. Fiscal Agent, Affiliated Computer Services ACS, by a participating provider for the Medicaid FeeForService program fulfills the State's requirement for compliance with an EPSDT comprehensive periodic screening visit. To accomplish this goal, L. Texas Vendor Drug Program. Users can also search for fee information for specified procedure codes. Key Details The ADA Dental Claim Form was revised in with editorial changes to form. Provider A physician M.



Updates are generally available the month following the effective date of the change. Community Health Plan of Washington Provider Manual CHPW Provider Manual Page 2 May Children's Health Insurance Program, Medical Care Services, Washington Health Program, Community Health Plan of Washington Provider Manual CHPW Provider Manual Page 3 May Help Prevent Fraud. Missouri Revised Statutes, cshcn services program provider manual Chapter, Crippled Children. Provider Manual. and the. 7 4 Kidney Health Care Program CSHCN Services Program helps. Disproportionate User Manual PDF MediCal Eligibility Procedures Manual PDF MediCal Manual of Criteria. Also, click here for additional information regarding the new ONLINE PAYMENT OPTION for those who have payment agreement fees. Services are provided by the Children with Special Health Care Needs CSHCN Services Program, a branch of the Texas Department of State Health Services. My Profile. Be sure to check any attachments associated with this CBT. Important Notice Effective October 1,, states were required by the Centers for Medicare and Medicaid Services CMS to incorporate all National Correct Coding Initiative NCCI methodologies into their systems for processing Medicaid claims. CSHCN provider manual part I. The purpose of the Children with Special Health Care Needs CSHCN Program policy manual is to provide accurate and timely information relating to the standards and business conduct of the CSHCN Program. The manual is regularly updated to reflect the most recent policy and procedure changes. The Texas Medicaid Provider Procedures Manual TMPPM is a comprehensive guide for Texas Medicaid providers. Health Insurance Claim Form, CMS Uniform Bill, UB Dental Claim Form. Some services for children may be covered under Early, Periodic, Screening, Diagnosis and Treatment EPSDT. The CSHCN Services Program provides coverage for nutritional assessment and. 1 1.

<https://participatedemocracy.com/images/comprehensive-stuttering-program-manual.pdf>



The Program pays for medical cshcn services program provider manual treatment and equipment for eligible children with special needs from birth to 21 years of age and for cshcn services program provider manual people cshcn services program provider manual of any age with cystic fibrosis. We also included information on other additional important functions and services in the manual. 6 2. MAINTENANCE MANUAL a West Virginia Medicaid provider number as though they were physically located in West Virginia. Designee from the Bureau for Children with Special Health Care Needs, Utah Department of Health, d. CSHCS Advisory Committee CAC Affordable Care Act. This Batch IDs will allow you to access your search results.Code of State Regulations, Crippled Childrens Service CCS Medicaid Provider Search. Contact Information. Code of State Regulations, Crippled Childrens Service CCS Medicaid Provider Search. Manual Children with Special Health Care Needs Services Program Search Capabilities for the CSHCN Services Program Provider Manual The online version of the CSHCN Services Program Provider Manual is available in portable portable document format PDF copy of the application and verify it is complete. Batch results are available within 36 hours. The CSHCN Services Program was created in to cshcn services program provider manual help children with special health care needs in Texas improve their health, wellbeing, and quality of life. If you are in Managed Care, please go cshcn services program provider manual to your health plan’s provider list or call your health plan for more information. Home; DSHS; Children with Special Health Care Needs; CSHCN Services cshcn services program provider manual Program Provider Manual Annual. One Parent Representative, other than the Chair and Vice Chair, as nominated and. Efforts to engage families in all areas of MCH program activities will be a key priority and will support moving the needle for all of the MCH populations in Texas.

<http://olesya-chagovets.com/images/comprehensive-review-of-pediatric-dentistry-manual.pdf>



CSHCN Services Program provider manual CSHCN Services Program provider manual Children with Special Health Care Needs Services Program provider manual Responsibility Children with Special Health Care Needs Services Program. However, formatting rules can vary widely between applications and fields of interest or study. Children with Special Health Care Needs; CSHCN Services Program Provider Manual Annual with Special Health Care Needs; CSHCN Services

Program Provider.SHCN Family Care Manual Forms Booklet.These numbers will provide you the following list of options.In addition, some of the local CSHCN programs offer case management services. IUD, Nexplanon, and Sterilization Providers. BCBSTX is contracted by the Texas Health and Human Services Commission HHSC to serve. This Provider Manual specifies eligibility and enrollment criteria that are unique to Covered California enrollees, provider services in its direct product lines. Texas Medicaid Provider Procedures Manual. The Program pays for medical treatment and equipment for eligible children with special needs from birth to 21 years of age and for people of any age with cystic fibrosis.Care MediCal Provider Manual Provider Manual is to furnish all Providers, including Participating Physician Groups PPGs and their affiliated Provider networks, specialty health plans, physicians or physician groups, hospitals, safety net providers, California CommunityBased Adult Services CBAS centers, and other ancillary providers. These fee schedules provide a view of the fees that were in effect during the first seven days of the selected quarter for the Medicaid program. To enroll in the CSHCN Services Program, DME providers must be actively enrolled in Texas Medicaid, have a valid CSHCN Services Program Provider Agreement, have completed the CSHCN Services Program enrollment process, and comply with all applicable state laws and requirements.

If you have questions about any of the topics in this manual, please call the CSHCS Program at cshcn services program provider manual local or out of state or Indiana. We recognize that the strength of our health care programs depends upon strong collaboration and communication with our providers, practitioners and their staff. Banner messages cshcn services program provider manual are used to update the manual. Missouri Revised Statutes, Chapter, Crippled Children. Health Insurance Claim Form, CMS Uniform Bill, UB Dental Claim Form. This is in contradiction cshcn services program provider manual to Children with Special Health Care Needs Northwest Region Minutes JulySeptember Click on the links below to obtain the CSHCN Services Program Family Support Services Provider Enrollment Application and Agreement and the FSS Provider Manual. An eligible code listed in TABLE 1 in Section is used. Click here to unsubscribe. The CSHCN Services Program Provider Manual is the prescribing providers' principal source of information about the CSHCN Services Program. 1. Current CSHCN Services Program Provider Manual Chapters Table of Contents. Note Citations are based on reference standards. FamilyProfessional partnerships remain an integral part of the Children with Special Health Care Needs Services Program CSHCN SP. June 3 Children with Special Health Care Needs Services Program. The Children with Special Health Care Needs CSHCN Program, in the Office of Maternal, Child and Family Health OCMFH advances the health and wellbeing of children and youth with certain chronic, debilitating conditions by providing specialized medical care and care coordination services to children under 21 years of age who meet financial and medical eligibility criteria. Genetic Diseases. Banner messages are used to update the manual.

<https://avenirpourtous.fr/wp-content/plugins/formcraft/file-upload/server/content/files/162880dde3110a--cambridge-audio-a500-manual.pdf>

Certificate of Medical Necessity for NonEmergency Transportation Texas Medicaid and CSHCN Services Program This form is to be completed by the provider requesting nonemergency transportation. Early and Periodic Screening, Diagnosis, and Treatment Children with Special Health Care Needs Program CSHCN. Subscribe. National Alliance for Caregiving. Contact the person's health care provider to obtain a prescription for mosquito repellent. The CSHCN Program is a public health program that provides information and referral services for health and related areas for families of CSHCN. Please complete this form in its entirety and fax to cshcn services program provider manual LogistiCare at In order for LogistiCare to schedule transport cshcn services program provider manual for your patient, we. Dec 28, payer entity, and the MDwises delegate, the claims payer has the responsibility. The CSHCN Program also has a nancial

component, the Physically Handicapped Childrens Program PHCP. About this Provider Manual Care is not participating in the Small Business Health Option Program SHOP Marketplace. Contact Information. Texas Health and Human Services Commission Pharmacy provider enrollment, Procedure manual, Managed care. Updates are generally available the month following the effective date of the change. The standing order may not be used for people enrolled in the HTW Program. OFFICE OF HEALTH INSURANCE PROGRAMS. Texas Vendor Drug Program. The CSHCN Services Program Provider Manual is the providers' principal source of information about the CSHCN Services Program.A.; Austin, Tex. This Provider Manual was created to assist you and your office staff with providing services to our members, your patients. The combination of each element of the EPSDT program's name makes the program unique Hawaii Medicaid Provider Manual 9 March cshcn services program provider manual 3. Description. EPSDT; Provider Relation Contact; Primary Care Provider; FeeForService.

[glasgowpools.com/contents//files/campbell-biology-lab-manual-answers.pdf](http://glasgowpools.com/contents//files/campbell-biology-lab-manual-answers.pdf)

DENTAL PROVIDER MANUAL "To abide by the DSS. Medical Assistance Program Provider Manuals, as amended from time to time, as well as all bulletins, policy transmittals, notices and amendments that shall be communicated to CSHCN. It contains information about Texas Medicaid benefits, policies, and procedures including medical, dental, and children's services benefits. Click on the links below to obtain the CSHCN Services Program Family Support Services Provider Enrollment Application and Agreement and the FSS Provider Manual. Chapter 1 TMHP and HHSC Contact Information. c. For information on NCCI as it applies to Medicaid, click here. These numbers will provide you the following list of options. Batch Search You should have received a Batch ID if you performed a search for the CSHCN Services Program Provider Manual, CSHCN Services Program website. If in doubt, please contact the Bureau of Medical Services, Provider Services, to determine if an outofstate medical provider has been granted border status. The CSHCN Program also has a nancial component, the Physically Handicapped Childrens Program PHCP. Product ID Texas cshcn services program provider manual Prior Authorization Program Provider Manual PDF Texas Medicaid Provider Procedures Manual. The fee displayed is the allowable rate for this service. The individual provider payment may differ based on provider type, client type. In order to receive reimbursement for Medicaid services, eligible healthcare providers must be approved for enrollment by and enter into a written agreement with HHSC. Provider enrollment will be detailed in Section 2 of this training. TMHP publishes the Texas Medicaid Provider Procedures Manual, a comprehensive guide for Texas Medicaid. Bi jiao wen xue yu wen hua yan jiu. San Francisco, where do your children live How a manufacturer can profit from facts. Investigations of the relationship between unionid clam shell parameters Elliptio complanata and mean chlorophyll a concentrates in lakes.

The CSHCN Services Program Provider Manual is the providers' principal source of information about the CSHCN Services Program. Current CSHCN Services Program Provider Manual Chapters Table of Contents. Introduction. Chapter 1 TMHP and HHSC Contact Information. Chapter 3 Client Benefits and Eligibility. Chapter 4 Prior Authorizations and Authorizations. CSHCN Services Program Provider Manual — April Display results with all search words % End of search results. Click on "CSHCN" on the tabs at the top of the provider homepage. Click on "Reference Material" on the lefthand side navigation bar to access provider manuals. CSHCN Provider Manual 5 Approval If the provider meets SHCN provider qualifications, approval will be sent to the provider with a copy of the approved Participation Agreement for Professional and Special Services Provider DHA. Click on the links below to obtain the CSHCN Services Program Family Support Services Provider Enrollment Application and Agreement and the FSS Provider Manual. CHDP School Handbook. Health Care Program for Children in Foster Care Resource Guide. MediCal Manuals. Disproportionate User Manual PDF MediCal Eligibility Procedures Manual PDF MediCal Manual of Criteria PDF. The Children with Special Health Care Needs CSHCN Systems Development Group



Systems Development works to strengthen communitybased services to improve systems of care for children and youth with special health care needs CYSHCN, including clients receiving health care benefits through the State's CSHCN Services Program, which is. The manual serves as an operational reference for health careFile Size KB. Manuals 1. CSHCS Guidance Manual for Local Health Departments 2. Michigan Medicaid Provider Manual Look for the following applicable chapters in the manuals Table of Contents Childrens Special Health Care Services CSHCS, Hospice, Respite, Out of State Authorization and Travel are all part of CSHCS Policy.

This online MHCP Provider Manual is your primary information source for MHCP coverage policies, rates and billing procedures and is updated on an ongoing basis.The CSHCN Program is a public health program that provides information and referral services for health and related areas for families of CSHCN. The CSHCN Program also has a nancial component, the Physically Handicapped Childrens Program PHCP.Guiding principles for our activities are reflected in the National Standards for Systems of Care for Children and Youth with Special Health Care Needs. Provider Manuals. Welcome. Your Provider Manual to the New York Medicaid Program offers you a wealth of information about Medicaid, as well as specific instructions on how to submit a claim for rendered services. The Provider Manuals page is divided into two sections Current Manual Type and Discontinued Manual Type. Both current and discontinued manuals have historical versions available. All discontinued manuals no longer contain active information and are strictly available for historical purposes. The Center was formed in Seattle, WA in as a program of Seattle Children's Hospital. We primarily serve families in the Pacific Northwest Washington, Alaska, Montana, and Idaho. We collaborate with a variety of health care organizations, state agencies, families, and health care providers to plan and implement grants and contracts that. The manual is divided into two major components, a general information and administration chapter and individual program chapters. The manuals include allprovider and providerspecific pages. Call us if you have questions about which provider manual you should use. Hide Table of contents x. Show Table of Contents. How to Read Your Provider Manual.

Texas Medicaid and Children with Special Health Care Needs CSHCN Services Program Nonemergency Ambulance Exception Submit completed form by fax to Provider Instructions for Nonemergency Ambulance Exception This form must be completed by the provider requesting a nonemergency ambulance exception. Community Based Nutrition Services for Children with Special Health Care Needs in Spokane County, Washington. Gilliam J, Laney S and Yang Y eds.We want the manuals and the Medicaid Information Bulletins to assist you as a Medicaid provider. Indiana Childrens Special Health Care Services provides supplemental medical coverage to help families of children who have serious, chronic medical conditions, age birth to 21 years of age, who meet the programs financial and medical criteria, pay for treatment related to their childs condition. Texas Health and Human Services Commission. n.d.. Early Childhood Intervention Services. Texas Medicaid Provider Procedures Manual. U.S. Preventive Services Task Force. Vision in Children Ages 6 months to 5 Years Screening. Some program participants receive services offered through the CSHCN Program using Title V funds. The CSHCN Services Program helps children with special healthcare needs and people of any age with cystic fibrosis secure health care and support services. Medicaid or Children with Special Health Care Needs CSHCN services program, benets. There is no cost for this service. If your doctor says you have an urgent need, you can set up trips with less than.Sincethe goal of the State Title V programs for children with special health. Language services are available to you at no cost. Texas Department of State Health Services. Proof of File Size 1MB. The guidelines define or explain the relevant statute and regulations and do not impose any requirements that are not otherwise set forth in statute or regulation. Here you will find Medicaid medical policies that are available for review and comment.

This site is specific to those providers who do not bill, or intend to bill, for acute care services

through TMHP and have an active Medicaid contract with DADS must enroll or reenroll through DADS. This manual is a comprehensive guide for Texas Medicaid providers. It contains information about Texas Medicaid fee-for-service benefits, policies, and procedures including medical, dental, and children's health services. Users can search for fee information for specific codes. To use a general fee schedule, Medicaid providers can click Static Fee Schedules. Texas Medicaid must comply with federal regulations which require all providers to revalidate their enrollment information every three to five years. For Texas Medicaid, any provider enrolled before January 1, 2013, must be fully reenrolled by March 24, 2016. Providers can begin this process immediately. The TMHP LMS is available to all providers and includes computer-based training CBT documents, webinars, and provider workshop materials. To access the LMS, providers must register and obtain a username. Click here to access the "How to register for the LMS" job aid. The LMS allows providers to View the course catalog; Enroll in courses; View enrollments; View LMS Resources Through these regulatory activities, HHS protects Texas citizens receiving home health, hospice and personal assistance services. Per licensing standards for HCSSA rule 97.249, If an agency has cause to believe that a client served by the agency has been abused, neglected, or exploited by an agency employee, the agency must report the information immediately within 24 hours to DFPS AND DADS at 800 4589858. Provider Self-Reporting. Licensed or certified DADS providers must notify the agency if someone in their care has been or may be physically or mentally abused, neglected or exploited. Employee Misconduct Registry.

The purpose of the Employee Misconduct Registry EMR is to ensure that unlicensed personnel who commit acts of abuse, neglect, exploitation, misappropriation, or misconduct against residents and consumers are denied employment in DADS-regulated facilities and agencies. All DADS-regulated agencies must search the EMR prior to the first face-to-face contact of the unlicensed personnel with the client. Hospice care addresses the patient's physical, emotional, social and spiritual needs. Hospice care also helps the patient's family caregivers. Federal In Texas, EPSDT is known as Texas Health Steps THSteps, which includes the preventive care components, or Early and Periodic Screening EPS, of the total EPSDT service. In addition, medically necessary healthcare services are provided to children and adolescents enrolled in THSteps even if the service is not available under the state's Medicaid plan to the rest of the Medicaid population. In Texas, these additional services are available through the Comprehensive Care Program CCP. Also, click here for additional information regarding the new ONLINE PAYMENT OPTION for those who have payment agreement fees. Changes to the ACA may happen over time. The MHPs are responsible for all of the medical care and treatment of their members. Community-based services beyond medical care and treatment are still available through the local health department CSHCS offices. It also provides links to additional information. This page will assist in the planning for future needs. The Fund helps with the purchase of equipment and services that promote optimal health, mobility, and development, enhancing the lives of children and their families. If you are ever asked for that by someone saying they represent CSHCS, do not share your information and notify CSHCS or your local health department immediately.